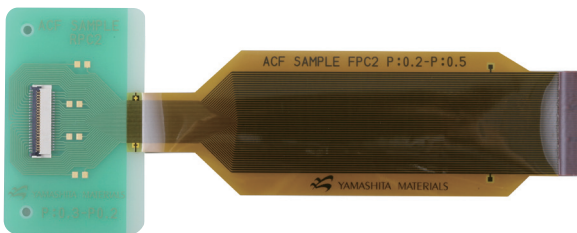
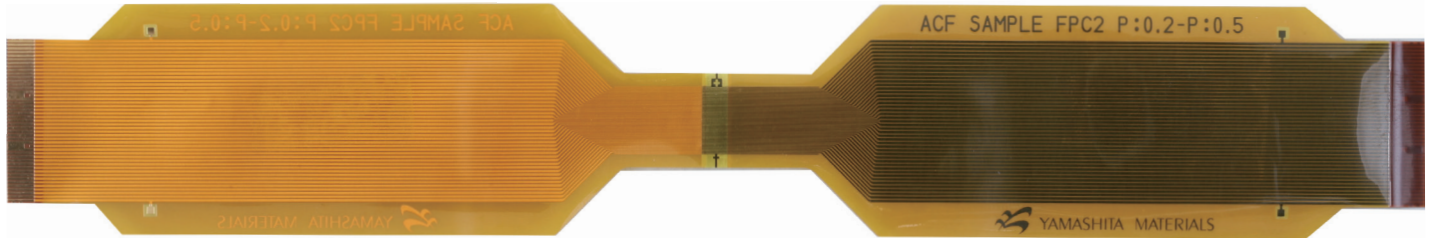
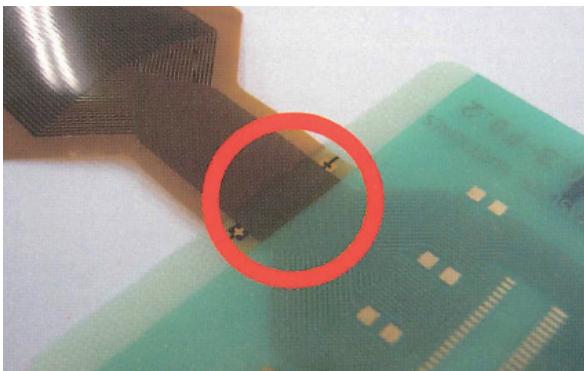


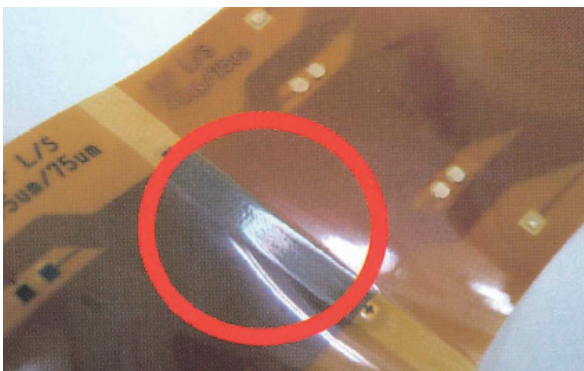
Narrow-pitch terminals can be connected by using an anisotropic conductive film!



## Junction of FPC and PWB



## Junction of FPC and FPC



### Specifications

- Minimum connection pitch: 75/75  $\mu\text{m}$
- Conduction resistance: 5  $\Omega$  or less
- Insulation resistance: 50 M $\Omega$  or more
- ACF width/thickness: 2 mm wide/35  $\mu\text{m}$  thick
- Heat tool: 3 $\times$ 35 mm

