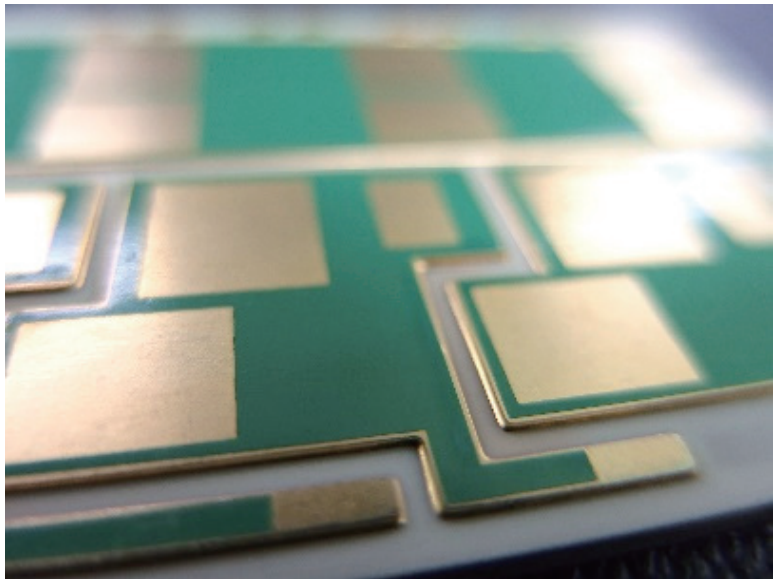
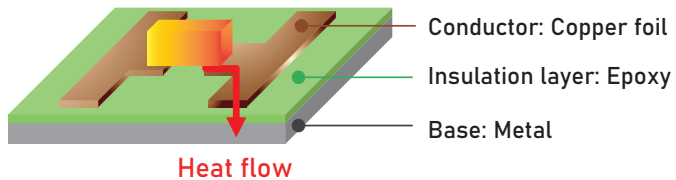


Metal-Based Heat Radiation Board

Used for the electric wiring in
an engine room or gasoline tank meter!

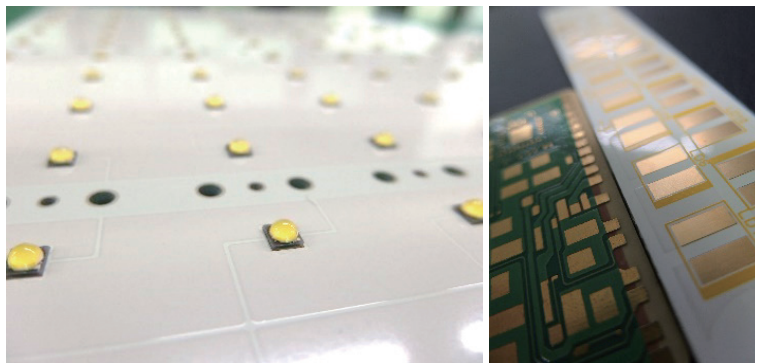


Features

- Improves the heat radiation performance based on heat conduction by using a metal as base.
- Lower in thermal expansion coefficient and higher in heat resisting properties as compared with an ordinary glass epoxy board.

Example of usage

- High-luminance LED lighting
(for car and light projector)
- Electrical component for automobile
- ECU and EPS
- Power MOSFET and IGBT
- DC-DC converter



Line-up

Component parts	Line-up (based on special specifications)
Copper foil	35 μ m、 70 μ m (105 μ m、 175 μ m)
Insulation layer	80 μ m、 100 μ m、 120 μ m
Aluminum	0.8mm、 1.0mm、 1.5mm (2.0mm) ※A6062、 A5052