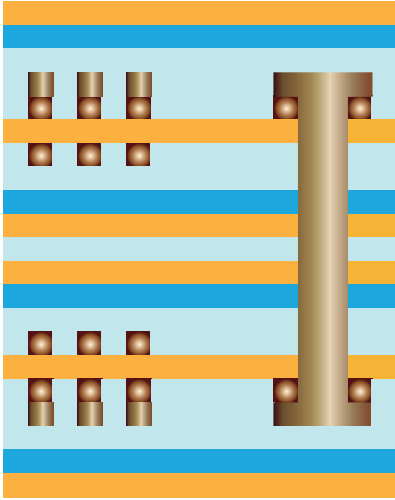


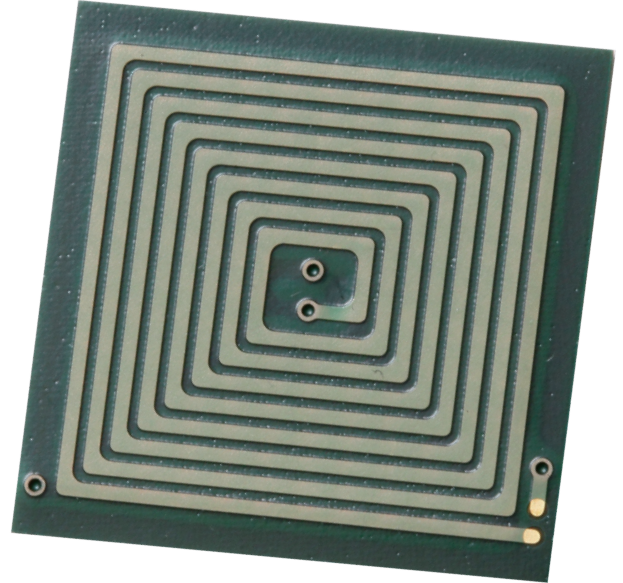
Multilayer Coil FPC

The number of coil turns increases because of space saved!

Layer structure



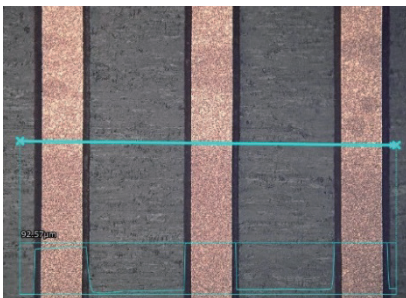
Thickness	Structure	
25	Polyimide	Coverlay
35	Adhesive layer	
40	Adhesive layer	Base materials
15	TH plating	
70	Rolled copper foil	Base materials
25	Polyimide	
70	Rolled copper foil	Coverlay
40	Adhesive layer	
35	Rolled copper foil	Base materials
25	Polyimide	
40	Rolled copper foil	Coverlay
25	Polyimide	
35	Adhesive layer	Base materials
40	Adhesive layer	
70	Rolled copper foil	Base materials
25	Polyimide	
70	Rolled copper foil	Coverlay
15	TH plating	
40	Adhesive layer	Base materials
35	Adhesive layer	
25	Polyimide	Coverlay



Features

- Space saved enables an increase in the number of coil turns.
- FPC can be made flatter, thinner, and lighter.
- FPC can be incorporated into a narrow space with the FPC bent.
- Expected to be used for a motor, power feeding coil, and sensor.

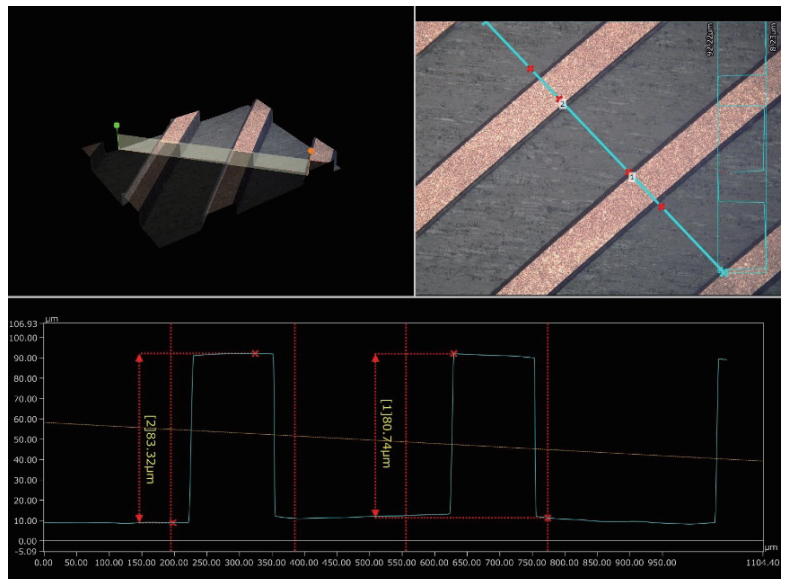
Circuit verification



Specifications of products
 Number of layers: 4
 Line & space: 200 μm/200 μm
 Copper thickness: 85 μm
 Number of turns: 100

Measuring equipment
 Made by KEYENCE
 Digital microscope
 VHX6000

3D analytic image obtained from the measured value



YAMASHITA MATERIALS