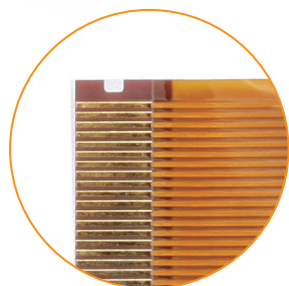
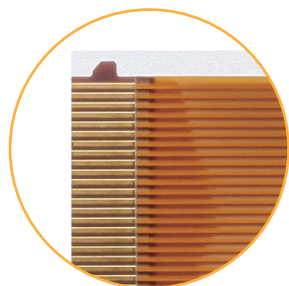


YFC Protruded/Notched Type

Concave type



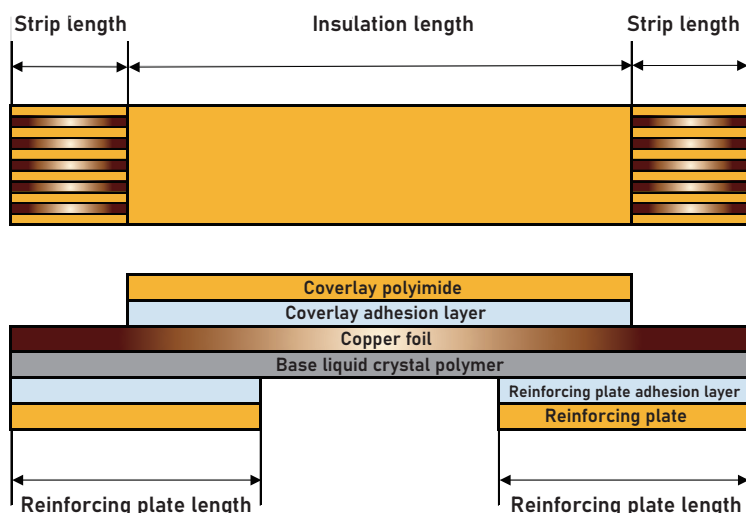
Convex type



Features

- Can provide a terminal with concave and convex portions depending on the connector specifications.
- Can be manufactured according the specified length, core count, and pitch.
- Can satisfy UL-certified specifications.
- Standard specifications-based products require no initial cost.

Configuration example



Standard specifications

Length	: 20 mm to 420 mm
Terminal pitch	: 0.3 mm (Zigzag terminal), 0.5 mm, 1.0 mm
Terminal area thickness	: 0.2 mm ± 0.03 mm (0.3 mm pitch terminal) 0.3 mm ± 0.05 mm (0.5 mm and 1.0 mm pitch terminals)
Reinforcing plate	: Strip length + 2 mm
Copper foil	: 18 μm electrolysis, 18 μm rolling, and 35 μm rolling
Surface treatment	: Electrolytic gold plating and lead-free solder plating



YAMASHITA MATERIALS